



colour laser printer

The designers' choice



Phaser[®] 7760

A3 Colour Laser Printer



Phaser 7760DN

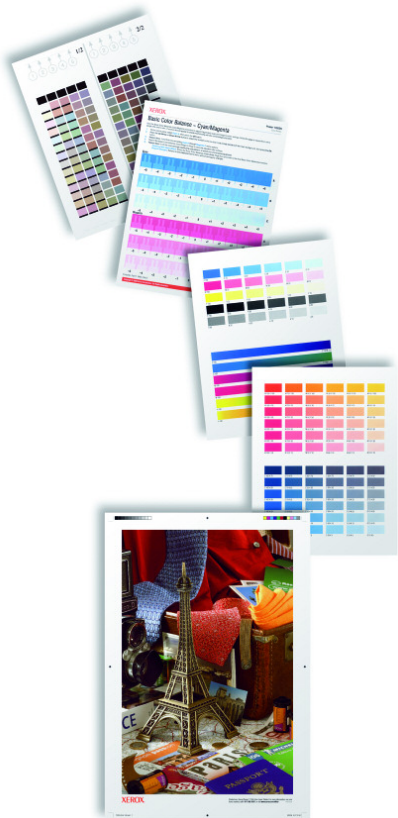
High-quality, consistent colour is crucial when you rely on stunning visuals to convey your ideas and concepts.

That's why the Xerox Phaser 7760 colour printer is the designers' choice. It offers brilliant colour, high speeds and easy-to-use features that make the most of everything you print.

Quality colour you can count on

The colour you want is the colour you get. This printer features technologies and software that allow you to specify and control the output colour, so the results match your expectations. You get consistent colour accuracy, sharp images, and crisp text, from the first page to the last.

- Up to 1200 x 1200 dpi resolution for fine line detail and crisp text.
- 600 x 600 x 4 dpi Photo Mode for smooth colour transitions, especially flesh tones.
- Glossy, vivid colours and rich, deep blacks.
- Black Trapping ensures that black text on coloured backgrounds and coloured text on black backgrounds prints sharp and clear.
- TekColor correction helps you simulate output colours of your computer screen, printing press or other device. Colour can be managed automatically as well as manually for office graphics, press separations, black and white graphics and spot colours via an industry-leading driver interface.
- PhaserMatch 4.0 colour management and calibration software adds another level of colour control and helps maintain colour accuracy.
- Incredibly consistent output through-out the length of the print run.

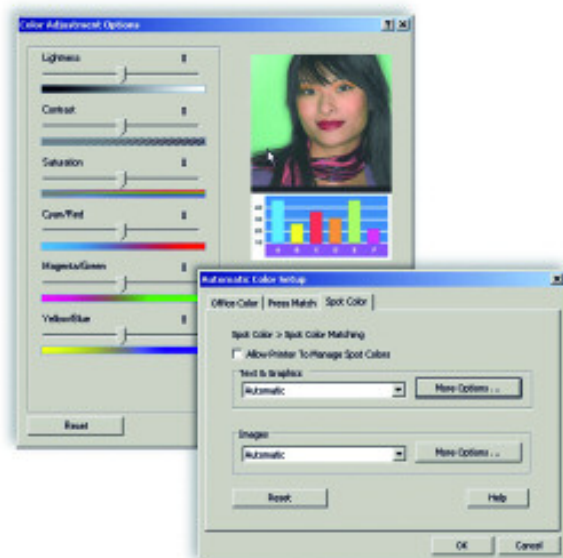


Built in colour calibration tools give you the final output you want.

Unbeatable performance

When it comes to printing important projects on time, you need both quality *and* speed. The Phaser 7760 printer is designed for high volume printing and offers impressive print speeds, efficient processing and other time saving features. You get the consistent quality you need, when you need it.

- Printing speeds up to 35 ppm colour and 45 ppm black and white.
- 800 MHz Power PC processor handles complex, graphic-intensive layout files with ease.
- First-page-out time as fast as nine seconds for colour.
- Up to 1 GB of memory minimises print queues and keeps production moving.
- Supports custom page sizes, booklet and banner printing, and reliably prints on a wide range of media types and heavy paper weights for maximum project flexibility.



Advanced colour tools allow you to fine-tune output to your specifications.



Large, six-line control panel gives quick access to all print functions and provides help solutions if needed.

Set up, manage and print with ease

Your busy office or graphics department needs a reliable printer that's easy to operate, requires minimal maintenance and won't slow you down. Simple setup and easy-to-use features of the Phaser 7760 save valuable time and free you up to focus on your work, not your printer.

- Simple automated print driver installation gets you printing in minutes.
- It fits easily into your office, either as a desktop unit or a hard-working floor model with plenty of paper capacity. Both require only front and side access.
- PrintingScout™ alerts and media size sensors offer built-in help to prevent misprints.
- PhaserSMART® remote diagnostic tool offers solutions and trouble-shooting help if needed, saving you time.
- CentreWare® Internet Services embedded web server allows you to manage, configure and troubleshoot your printer from any location on the network using a web browser.
- Smart Tray feature provides real-time paper tray status at your desktop – showing available media types and sizes – and automatically selects the correct tray.
- Smart two-sided printing feature automatically detects single-page print jobs and bypasses the duplex unit.



Phaser 7760GX with Professional Finisher

Advanced finishing and paper handling

- Optional finishers eliminate the effort and expense of collating, folding and stapling by doing it for you.

Finishing Options



Sort (Job Offset) and Collate
Save valuable time



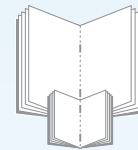
Staple
Multiple position and placement to enhance usability



Hole punch
Options meet worldwide conventions



Fold
V-fold brochures are folded and ready for distribution



Booklet
Saddle-stitch booklets in-house to reduce costs and eliminate delays

- If you are printing a lot, why keep reloading paper or switching media in the trays? Add a 1,500-sheet or a 2,500-sheet high-capacity feeder.



Call today. For more information, call **00 800 9000 9090** or visit us at www.xerox.com/office

CONFIGURATIONS	7760DN	7760GX	7760DX
Speed	Up to 35 ppm colour / 45 ppm black and white		
Duty Cycle	Up to 150,000 pages / month		
Paper Handling			
Paper Input	Tray 1: up to 150-sheets Tray 2: up to 500-sheets Total 650 sheets	Tray 1: up to 150-sheets Tray 2: up to 500-sheets 1,500-sheet High-Capacity Feeder Total 2,150 sheets	Tray 1: up to 150-sheets Tray 2: up to 500-sheets 2,500-sheet High-Capacity Feeder Total 3,150 sheets
Finishing Options	Advanced Finisher: 3,500-sheets, stapler, stacker, 2/4-hole punch Professional Finisher: 2,000-sheets, stapler, stacker, 2/4-hole punch		
Automatic 2-sided Printing	Standard		
Print			
First page out time	As fast as 9 seconds colour, 6 seconds black and white		
Maximum Resolution	up to 1200 x 1200 dpi		
Processor	800 MHz		
Language Support	Adobe® PostScript® 3™, PCL 5c, Adobe PDF-Direct		
Connectivity	Ethernet 10/100/1000 BaseTX, USB 2.0		
Memory (Std / Max)	512 MB / 1 GB		
Hard Drive	Standard 40 GB internal hard drive		
Print Features	Custom Size Pages, Booklet Printing, Banner-size Printing*, Smart Trays, Proof, Secure, Saved and Personal Print, Personal Saved, Print With, PDF Direct, Extended Font Storage, Job Collation, PrintingScout®, PhaserSMART®, Intelligent Ready		
	PhaserCal Colour Calibration	PhaserCal plus PhaserMatch 4.0 Colour Management	
Accounting	Job Accounting, Usage Analysis Tool		
Warranty	One year on-site**		

* Width of 320mm is limited in length, performance of banner-size printing is affected by media length and media weight. Banner printing requires memory upgrade to 1GB.
** Products purchased under a "Page Pack" agreement do not carry a warranty, but please refer to your service agreement for full details of your enhanced service package.

SPECIFICATIONS

Features

Font capabilities 137 Resident PS fonts and 81 PCL
Printer drivers Windows 2000/XP 32 and 64 bit OS, MacOS 9.x/X, version 10.2 or higher, Novell NetWare 4.x/5.x/6.x, UNIX (Linux 5.2+, Sun OS 4.x/Sun Solaris 2.4+, DEC, HP/UX 11.x, IBM AIX 4.2+, SGI, SCO), Xerox Walk-up printing drivers with Windows 2000 or higher

Languages True Adobe® PostScript® 3™, PCL5c emulation with automatic sensing and switching.

Special Features

PrintingScout Instantly displays pop-up Help if attention is needed during print jobs.

PhaserSMART provides automated internet-based support.

Auto Install automatically gets you printing over the network in seconds.

Productivity tools for the user: Secure Print, Proof Print, Saved Print, Personal Print, Booklet printing, Scaling, Watermarks, Collation, Separation pages, N-up, Run Black, Smart Duplexing, Intelligent Ready, Remote printing, Configurable Tray 1 Behaviour, Job Pipelining, Extended Font Storage.

Productivity tools for the IT manager: CentreWare IS Embedded Web Server, MailinX Email Alerts, Printer Neighbourhood, CentreWare Printer Management Software, Job Accounting, Usage Analysis.

Paper Handling

Tray 1: standard: 150 sheet capacity. 75–255 gsm, Custom sizes ranging from width of 100–320* mm and length of 140–1200 mm Envelopes: #10, Monarch, A7, DL, C6, C5, C4, B5.

*Width of 320 mm is limited in length, performance of banner-size printing is affected by media length and media weight. Banner printing requires memory upgrade to 1GB.

Tray 2: standard: 500 sheet capacity. 75–220 gsm, Custom sizes from 140 x 182 mm to 297 x 432 mm

Tray 3: standard on GX and DX: 500 sheet capacity. 75–220 gsm, Selectable standard sizes up to A3/297 x 420 mm

Trays 4, 5: standard on GX: 1,000 sheet capacity. 75–220 gsm, Selectable standard sizes up to A3/297 x 420 mm

Trays 4, 5: standard on DX: 2,000 sheet capacity. 75–220 gsm, A4/210 x 297 mm and B5/182 x 257 mm

All tray capacities based on Xerox 75 gsm

Automatic 2-sided printing: 75–169 gsm

Finishing: Staples on media up to 80 gsm, Folds and Staples up to 10 booklets of 15 sheets

Colour Controls

Colour standards PANTONE®-approved solid-colour simulations, Adobe PostScript device-independent colour, CIE International colour standards, and support for ICC, ICM and Apple ColorSync colour management systems

Colour correction TekColor Dynamic Correction Colour Profiles selectable from the driver: Automatic, sRGB Display, sRGB Vivid, LCD Display, SWOP, Euroscale, Commercial, SNAP, Japan Colour, ISO Coated, ISO Uncoated, Black and White, None, and custom colour sliders. Plus up to 10 custom TekColor corrections based on device profiles (with PhaserMatch 4.0).

PhaserMatch 4.0 colour management for custom profiles Standard GX and DX, Optional DN.

Operating

Dimensions 7760DN: width: 644 mm, height: 493 mm, depth: 724 mm, weight: 92 kg.; 7760GX: width: 644 mm, height: 857 mm, depth: 724 mm, weight: 122 kg.; 7760DX: width: 644 mm, height: 857 mm, depth: 724 mm, weight: 132 kg., Finisher: width: 644 mm, height: 991 mm, depth: 889 mm, weight: Advanced: 83 kg, Professional: 115 kg

Environment Temperature: Storage: -20° to 48° C; Operating 10° to 32° C; Relative Humidity: Storage: 30% to 85%, Operating: 10% to 85%. Noise Level: 33dBA standby, 51 dBA running.

Electrical 220V, 50/60Hz model: Consumption: Printing: 764 Watts, Standby: 135 Watts, Power Saver: 14 Watts, ENERGY STAR® qualified printer, Default time to Power Saver: 60 min.

Regulatory FCC Part 15, Subpart A, UL listed to UL 1950, CSA certified to CSA-C35.4 No. 950, CE Mark applicable to directives 73/23 EEC and 89/336/EEC CDRH, EN 55035.

Services

One year on-site Warranty*, online web technical support and telephone support. Innovative service offerings include optional extended Service Agreements.

Consumables	
Toner Cartridges*	
Black (32,000 pages)	106R01163
Cyan (25,000 pages)	106R01160
Magenta (25,000 pages)	106R01161
Yellow (25,000 pages)	106R01162
Staple Pack	
Stacker Staples (15,000)	008R12941
Booklet Staples (20,000)	008R12925

*Capacities are approximate, based on 5% coverage on an A4-sized page.

Routine Maintenance Items	
Imaging Unit (Up to 35,000 pages)	108R00713
Fuser (220 V) (Up to 100,000 pages)	115R00050
Waste Cartridge (Up to 27,000 pages)	108R00575
Transfer Roller (Up to 100,000 pages)	108R00579
Belt Cleaner Assembly	108R00580

Options and Upgrades	
512 MB Phaser Memory	097S03635
1,500-sheet High-Capacity Feeder (three 500-sheet Universal trays)	097S03628
2,500-sheet High-Capacity Feeder (one 500-sheet Universal tray, plus two 1,000-sheet A4 trays)	097S03629
Advanced Finisher 3,500 sheets, stapler, 2/4-hole punch	097S03632
Professional Finisher 3,000 sheets, stapler, 2/4-hole punch, booklet maker	097S03633
Printer Cart	097S03748
PhaserMatch 4.0	097S03634

Consumables for the Phaser 7760 are part of the Xerox Green World Alliance Supplies Recycling Programme. For more information, please visit the Green World Alliance website at www.xerox.com/office/gwa

OUTSTANDING MEDIA CAPABILITY

Take full advantage of the new Phaser 7760 colour printer with our comprehensive Xerox Paper and Speciality Media portfolio, which includes a selection of papers, labels and transparencies that come in a variety of weights and sizes. For a current listing of all recommended printing media visit www.xerox.com/office/7760supplies

