



Affordable power for the busiest office



Phaser® 8560

Phaser® 8560MFP



*Solid ink is earth-friendly.
It generates 1/40th the waste
of a typical colour laser device.*

A colourful choice...

Xerox offers a choice of value-packed office devices that deliver the utmost in productivity: The **Phaser 8560** printer gives busy workgroups a fast, affordable, easy-to-use colour printer that can expand from a desktop model to a four-tray, floor-standing powerhouse; the **Phaser 8560MFP** multifunction printer adds top-of-the-line copying, scanning and faxing for all your office document needs.

Outstanding colour

The Phaser 8560 printer and the Phaser 8560MFP multifunction printer give you precise details and rich, vibrant colours.

- Count on superior output on everything from cover stock to recycled paper. Confidently handle colour projects in-house and reduce costs and increase efficiency.
- True Adobe® PostScript® 3™ and automatic colour-enhancement tools ensure that colour-intensive documents print reliably and accurately.
- Produce fast, versatile prints for everyday jobs. When you really want to impress, switch to 2400 FinePoint™ print resolution mode.
- Nothing else on the market offers more consistent, vivid colour. The last page of a large print job looks as good as the first.



*Go ahead, get creative.
Print on business card
stock, postcards, labels,
transparencies and more.
You can expect the same
brilliant output no matter
what the media.*

Phaser 8560



A colour printer that meets the challenge

The Phaser 8560 printer delivers fast, attention-grabbing results.

- Pick up the pace with a first-page-out print time as fast as five seconds. Both black and white and colour print at up to 30 ppm.
- A 600 MHz processor and 256 MB of memory (upgradeable to 1 GB) provide the power you need for the most intense projects.
- Put off reloading paper, or swapping one size for another, with a combined paper-tray capacity of 625 sheets – a huge stack of paper for a device that sits on a desktop. Add a third and fourth tray to increase capacity to 1,675 sheets.
- Handy productivity printing tools are standard, not expensive add-ons: job accounting, custom-size pages, image smoothing, and many more.
- Automatic two-sided printing saves time and reduces paper costs.

Phaser 8560MFP

Multiple functions, no waiting

The Phaser 8560MFP will tackle your workload with an array of time-saving tools:

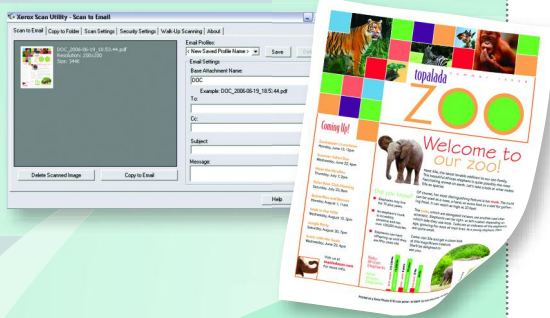
- Access walk-up copying, scanning, or faxing functions when you need them, even while other jobs are printing. Spend your valuable time working, not waiting for your turn.
- See the first page of your copy job in as little as 15 seconds and the first page of your print job in as little as six seconds. Print black and white and colour at up to 30 ppm.
- Gather all those loose paper documents and scan them straight to your desktop, or to a public or private folder. Organise, edit, and distribute files with powerful onboard scanning tools.
- LAN Fax lets you send faxes directly from your PC.
- An array of productivity tools for all functions is standard.



Superior design and ease of use

Large paper trays let you print more without interruption.

- ① 100-sheet Tray 1 for a wide range of custom media and sizes
- ② Generous 525-sheet Tray 2
- ③ ④ Add one or two 525-sheet trays for a total capacity of 1,675 sheets



An ace up your sleeve: Scanning tools

Use the power of scanning and your Phaser 8560MFP to efficiently organise, edit and distribute information.

- Scan documents straight to your desktop. Edit them now or store them for access later.
- Scan documents to a public folder. This gets them off your desktop and makes them accessible to anyone.
- Scan documents to password protected private folders. This allows central storage but restricted access.

Scan to PC Desktop® software

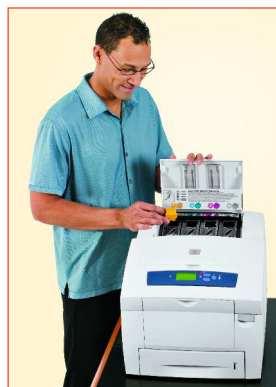
Plus, we include a valuable scanning software bundle with the 8560MFP/X configuration:

Convert: Quickly convert paper and PDF documents into editable and searchable digital documents – supporting Microsoft® Office applications – with accurate page layout and format.

Organise and share: Quickly and easily scan, annotate, or archive documents in PDF file format. The PDF files can be viewed, accessed and arranged via large, clear thumbnails on the desktop and shared with a simple drag-and-drop.

No-fuss productivity

A simple, cartridge-free design and a host of helpful features make these devices easy to set up, operate and share.



- Streamlined, automated driver installation gets your device up and running in minutes.
- Replenishing ink is as easy as reloading a stapler. There's no mess to clean up and no bulky boxes to store.
- PrintingScout™ technology monitors your print projects. If a potential issue arises, a handy pop-up alert suggests a remedy.
- Manage, configure and monitor print jobs directly from your computer thanks to the CentreWare® IS Embedded Web Server.
- Built-in security tools (standard on the Phaser 8560 DX and all Phaser 8560MFP configurations) keep your data safe. Secure Print holds hard-copy output until a PIN is entered, and Hard Drive Overwrite "shreds" data after every job or on request.



A monthly duty cycle of 85,000 pages (170 reams of paper!) guarantees long-lasting reliability and quality for your busy workgroup.

Phaser® 8560 / 8560MFP



What do both products have in common?

Solid Ink

Easier to use than colour lasers or ink jets, solid ink delivers high performance, a very low cost of ownership, and outstanding print quality.



Colourful, versatile and easy to use

PRINT

Phaser® 8560 High-performance printing

- Super-fast 30 ppm printing for both colour and black and white
- Outstanding print quality and flexible media handling
- Feature-packed

COLOUR

The impact of colour
Colour attracts, clarifies and sells. It is one of the most effective business tools available.

EASE OF USE

Easy to install, use and manage
Boost productivity with devices that make office life easier.

Phaser® 8560MFP Sophisticated functionality

- Print, copy, scan and fax together in one device
- Multi-tasking performance
- Advanced fax capabilities

PRINT

COPY

SCAN

FAX

Phaser® 8560 / 8560MFP



CONFIGURATIONS	8560N	8560DN	8560DT	8560DX	8560MFP/N	8560MFP/D	8560MFP/T	8560MFP/X
Speed	Up to 30 ppm colour / 30 ppm black and white							
Duty Cycle	85,000 images / month							
Paper Handling	Tray 1: 100 sheets; Custom sizes: 76 x 127 mm to 216 x 356 mm Tray 2: 525 sheets; Selectable sizes: 140 x 216 mm to 216 x 356 mm Paper input							
Document handler	NA			Document Glass	Duplex Automatic Document Feeder: 50 sheets			
Tray 3: 525 sheets	Optional		Standard		Optional		Standard	
Tray 4: 525 sheets	Optional			Standard		Optional		Standard
Paper output	250 sheets							
Two-sided output	Optional		Standard		Optional		Standard	
Copy								
First-page-out time	NA			As fast as 15 seconds colour / 15 seconds black and white				
Resolution (max)	NA			600 x 600 dpi				
Copy features	NA			Book copying**, Booklet creation, Collation, Covers, Image Center, Image shift, N-up, Reduce / Enlarge, Repeat image, Colour Password Protection				
Print								
First-page-out time	As fast as 5 seconds colour				As fast as 6 seconds colour			
Resolution (max)	Up to 2400 FinePoint™							
Memory (std / max)	256 MB / 1 GB			512 MB / 1 GB				1 GB / 1 GB
Processor / PDL	600 MHz processor / True Adobe® PostScript® 3™, PCL® 5c emulation							
Connectivity	10/100Base-TX Ethernet, USB 2.0							
Print features	Custom-size pages, Xerox Installer, Intelligent Ready, Booklet printing**, Smart Trays, Remote Printing, Job Accounting, Printer Neighbourhood, Run Black							
Productivity kit	Optional			Hard drive: Personal/Personal Saved/Secure/Proof/Saved Print, Print With, Extended font/form storage, Collation, Hard Drive Overwrite				
Scan								
Scan destinations	NA			Scan to PC / Mac, Scan to TWAIN, Scan to email, Scan to User Desktop, Scan to Public / Private Folders				
Scan to PC Desktop®	NA			Optional		Standard		
Fax								
Fax features	NA			33.6 kbps Super G3, 200 individual / 100 group Speed dials, fax to multiple addresses, Fax security				
Warranty	One-year on-site warranty*							

* Products purchased under a "PagePack" agreement do not carry a warranty. Please refer to your service agreement for full details of your enhanced service package. ** Requires 2-sided printing.

Device Management

Xerox® CentreWare® Printer Management for Microsoft, Novell and UNIX, Xerox CentreWare® IS Embedded Web Server, CentreWare Web, Xerox NDPS Gateway, Usage Analysis Tool, Configuration card, PrintingScout™, MailInX email alerts, PhaserSMART®

Print Drivers

Windows® 2000/XP/2003 Server, Vista, Mac OS® 9.x/X version 10.2 and higher, Novell NetWare® 5.x/6.5 (NPDS only), UNIX/Linux (see web), Xerox Walk-Up® Printer Drivers

Security

802.1x protocol*** (EAP-MD5, EAP-TLS, EAP-PEAP-MSCHAPv2)

Media Handling

Tray 1: 60 – 220 gsm;
89 x 127 mm to 216 x 356 mm
Trays 2 – 4: 60 – 120 gsm;
140 x 216 mm to 216 x 356 mm
Duplex Automatic Document Feeder:
60 – 120 gsm

Media types: transparencies, envelopes, labels, glossy paper, custom-size paper

Operating Environment

Temperature: Non-operating: -30° to 60° C; Operating: 10° to 32° C
Relative Humidity: Non-operating: 10% to 95%; Operating: 10% to 80%
Sound power levels:
Operating: 54 dBA, Standby: 33 dBA

Electrical

Power: 220 – 240 V, 50 – 60 Hz
Power consumption: Average: 230 W /
Max: 1500 W; ENERGY STAR® qualified (S configuration only)

Dimensions (WxDxH)

Phaser 8560: 406 x 533.4 x 368 mm;
Weight: 28 kg. Additional feeder: 135 mm
Weight: 7.3 kg.
Phaser 8560MFP: 532 x 665 x 620 mm; Weight:
43 kg. Additional feeder: 135 mm Weight: 7.3 kg.
Optional cart:
500 x 670 x 360 mm

Certifications

Certified to UL 60950-1/CSA 60950-1-03 1st Edition, FCC Part 15 Class A, Low Voltage Directive 73/23/EEC, EN 60950-1 EMC Directive 89/336/EE3, GOST EN55022 Class A, EN 55024, ROHS Directive 2002/95/EC



Call today. For more information, call **00 800 9000 9090** or visit us at **www.xerox.com/office**

*** Available for 8560MFP in Q2 2008

Copyright © 2007 XEROX CORPORATION. All rights reserved. Contents of this publication may not be reproduced in any form without permission of XEROX CORPORATION. XEROX®, Phaser®, PhaserSMART®, CentreWare®, PrintingScout™ and Walk-Up® are trademarks of XEROX CORPORATION in the U.S. and/or other countries. Total Satisfaction Services is a service mark of XEROX CORPORATION. All other trademarks are the property of their respective manufacturers. PANTONE Colours generated may not match PANTONE-identified standards. Consult current PANTONE publications for accurate colour. PANTONE, and other Pantone, Inc. trademarks are the property of Pantone, Inc. PCL® is a registered trademark of Hewlett-Packard. As an ENERGY STAR, partner, Xerox Corporation has determined that this product meets the ENERGY STAR guidelines for energy efficiency. ENERGY STAR and the ENERGY STAR mark are registered U.S. marks. The information in this brochure is subject to change without notice. 01/08 856BR-01ED